

1W DUOX PLUS VIDEO CITY VEO-XL WIFI KIT



Referentie: 9471

Fermax presents the new VEO-XL WIFI DUOX PLUS kits **for single-family houses, offices and businesses** .

The kits include all the necessary materials for its installation: CITYLINE entrance panel, VEO-XL...

BESCHRIJVING

Fermax presents the new VEO-XL WIFI DUOX PLUS kits **for single-family houses, offices and businesses** .

The kits include all the necessary materials for its installation: CITYLINE entrance panel, VEO-XL WIFI monitor and power supply.

In addition, they work with DUOX PLUS, a fully digital door entry and video door entry system and technology on two non-polarized wires, which simplifies their installation while maintaining the highest quality in the product and design,

They include the VEO-XL WIFI DUOX PLUS monitor as standard, equipped with a Wi-Fi connection that **allows calls to be forwarded to mobile devices** .

Thanks to the **Fermax BLUE application** , available for free in the Play Store and App Store, the video door entry functions can be managed directly from a mobile or tablet, to connect to your home, wherever you are. By connecting your WiFi DUOX PLUS monitors with the BLUE app, a range of possibilities will open up. Of all of them we highlight two that will be key: Divert calls from the video door entry unit to your mobile and open the door to the house from a distance.

They also come as a standard with the **Photocaller** feature, which automatically captures an image of the caller. If the user decides to activate this function, the monitor stores up to 150 images, indicating the date and time when they were taken. When the maximum capacity has been reached, taking a new photo will erase the first one stored. The screen always indicates if there are photos not displayed or if the date / time are not configured.

The **VEO-XL WIFI DUOX PLUS** hands-free **monitor** is characterized by its thickness, extra-flat. Thanks to its OSD menu and the layout of the buttons, its interaction with the user is simple and intuitive.

It is made of high impact ABS plastic.

Includes a 7" widescreen color display (16: 9).

Its balanced design of pure lines is distinctive, modern and minimalist.

DUOX PLUS is the new digital technology that exceeds all expectations. Because it makes the difficult easy.

TECHNISCHE SPECIFICATIES

It includes:

- ◆ 40708 CITY PANEL DUOX PLUS S1 CP101
- ◆ 8948 CITY FLUSH BOX FOR KIT (S1)
- ◆ 9469 DUOX VEO-XL WIFI 7" MONITOR
- ◆ 9447 DUOX PLUS CONNECTOR

- ◆ 4825 POWER SUPP. UNIT+FILTER DIN10 24VDC-2.5A
- ◆ 4802 P.S.U. DIN4 230VAC/12VAC-1A

Video:

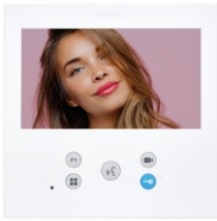
- Sensor: 1/3 "CMOS color.
- Effective pixels>, 340K. (the camera captures 720x576)
- Minimum external lighting: 0 lux. Since it has LEDs, no additional lighting is required.
- S / N>, 45dB.
- Frame rate 25 fps.
- Resolution>, 368x288 pixels.
- Video codec: H264 Highline Profile
- Auto iris.
- Auto BLC.
- Angle of vision 100° horizontal, 80° vertical.
- Fish eye correction.
- Color night vision through white LEDs.
- Pan &, Tilt digital zoom.

Gewicht: 2,684269 kg

Afmetingen van het product indien verpakt: 23x13x24 cm

EAN 13: 8424299094717

Inbegrepen producten



DUOX PLUS VEO-XL WIFI 7" MONITOR

Ref.: 9469

VEO-XL WIFI is uitgerust met een **Wi-Fi-verbinding waarmee oproepen naar mobiele apparaten kunnen worden doorgeschakeld**. Dankzij de Fermax BLUE-app...

[+ INFO](#)



DUOX PLUS CONNECTOR

Ref.: 9447

Necessary to mount the monitor on the wall surface.

[+ INFO](#)



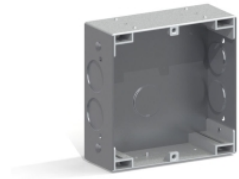
P.S.U. DIN4 230VAC/12VAC-1A

Ref.: 4802

Used to power the different equipment in a Fermax installation.

Constructed in self-extinguishing VO material. Includes a set of covers to protect the...

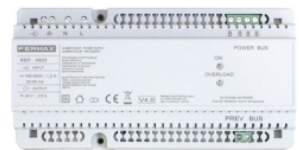
[+ INFO](#)



CITY FLUSH BOX FOR KIT (S1)

Ref.: 8948

[+ INFO](#)



POWER SUPP. UNIT+FILTER DIN10 24VDC-2.5A

Ref.: 4825

Used to power the different equipment in a DUOX PLUS Fermax installation.

Constructed in self-extinguishing VO material. Includes a set of covers...

[+ INFO](#)



CITY PANEL DUOX PLUS S1 CP101

Ref.: 40708

Installed in the accesses to the building, they allow communication with the dwellings, opening the door, calling the concierge, etc.

CityLine Outdoor...

FERMAX

+ INFO
